

An underwater scene with a blue background. On the left, there is a large blue anchor with a brown rope. In the center, a small orange and white clownfish swims. On the right, a large blue and white whale is visible. The bottom of the scene features various sea anemones and coral. The text is overlaid on this scene.

WiLLies English

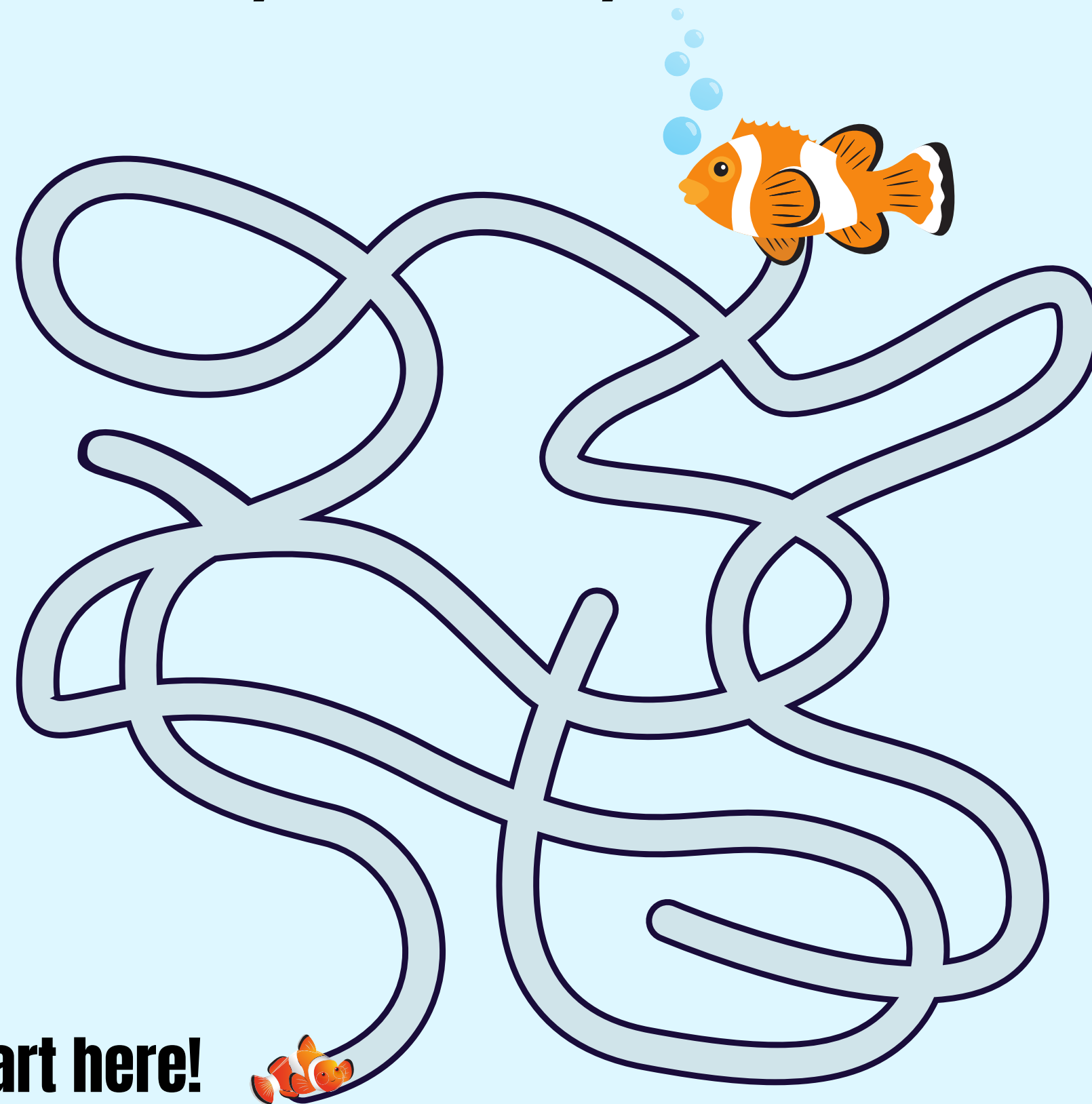
PRESENTS

# Sea Animals

**WORKBOOK**



# Help Nemo, the fish, find his father.

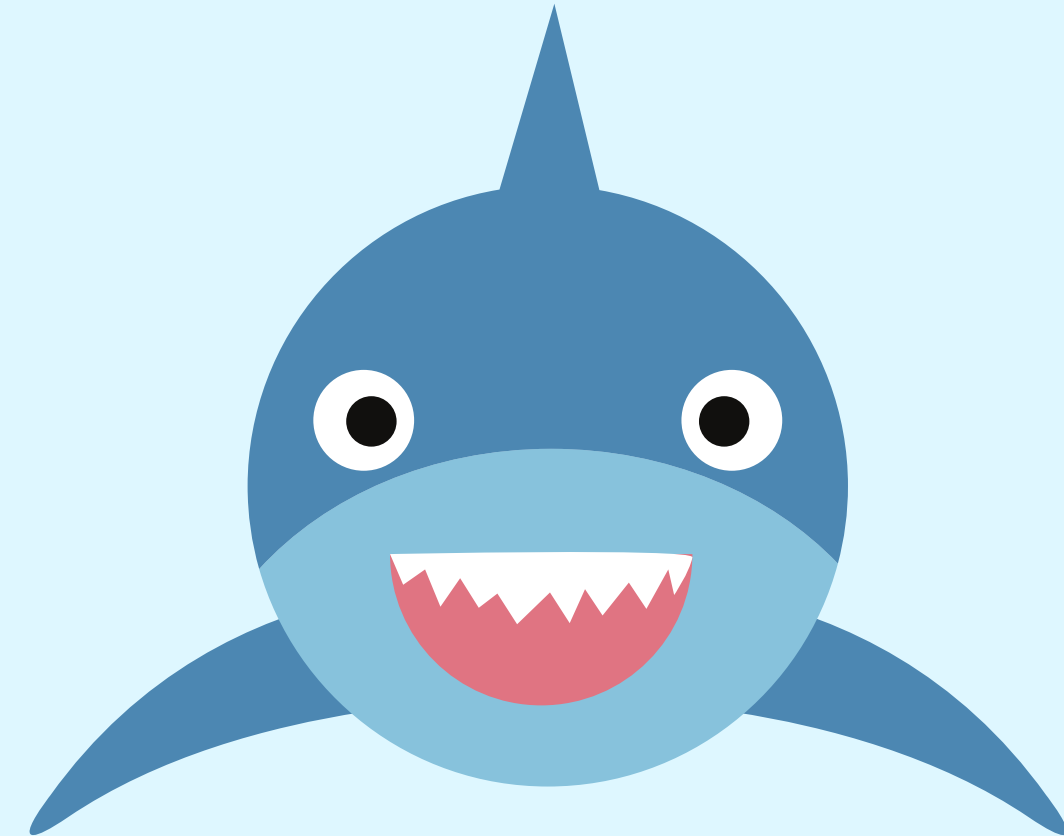
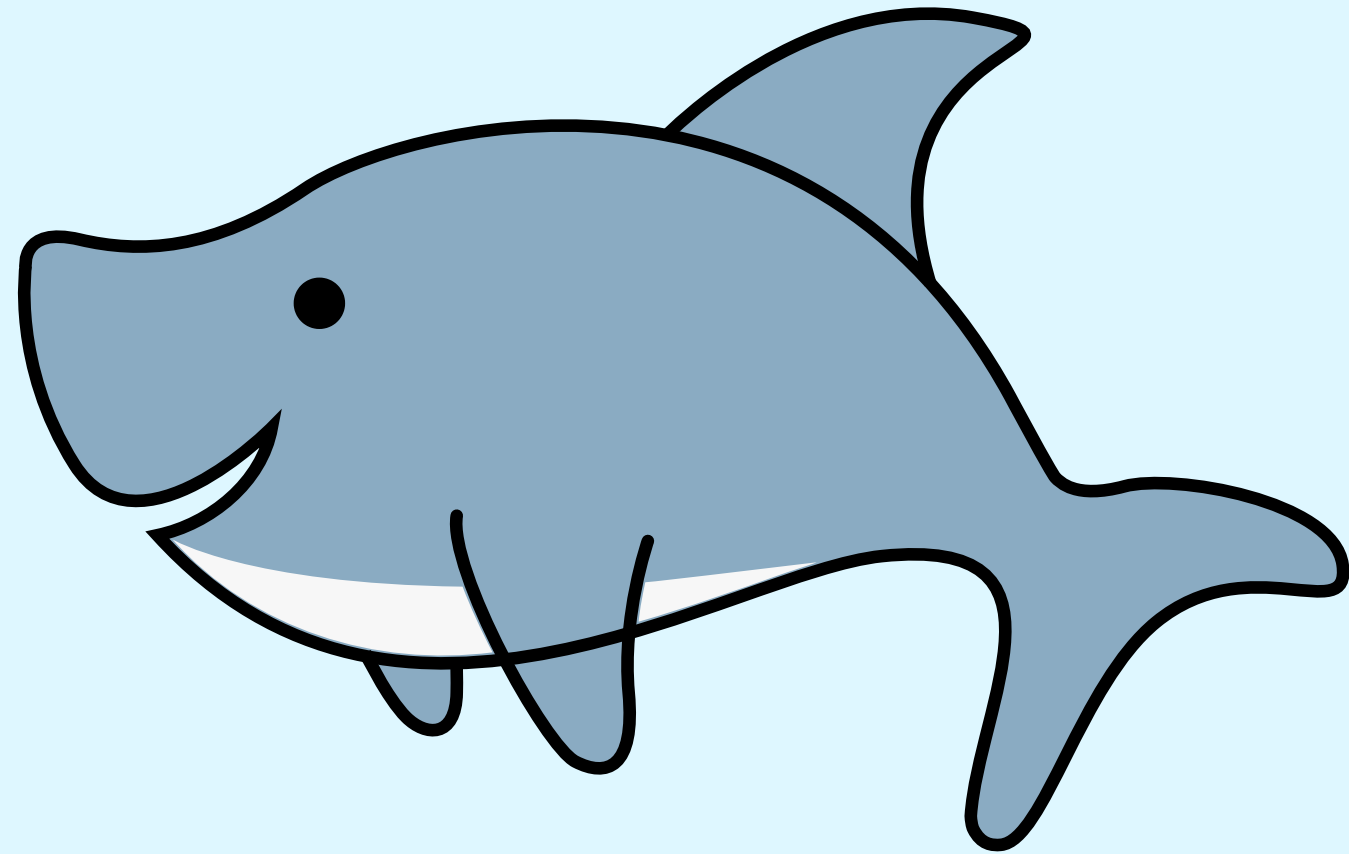


**Start here!**



**Let's read and trace!**

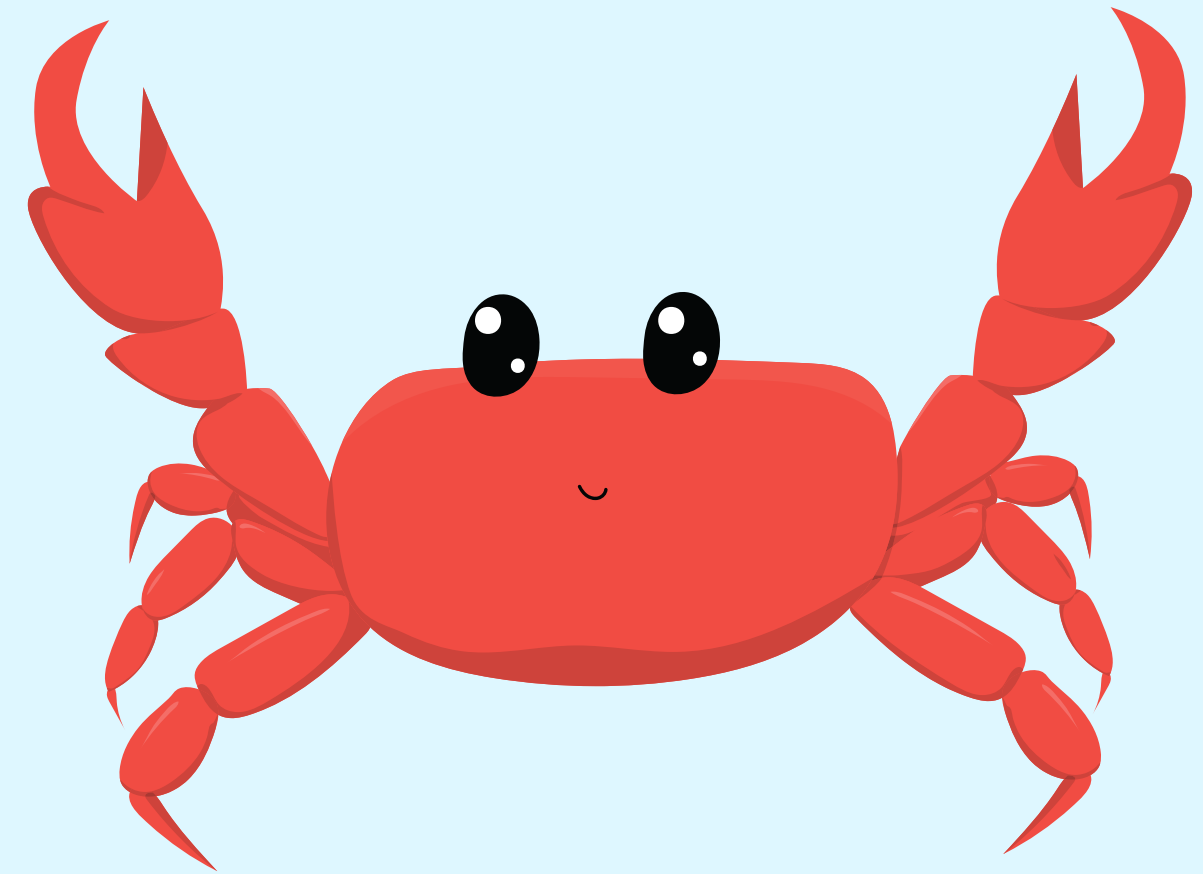
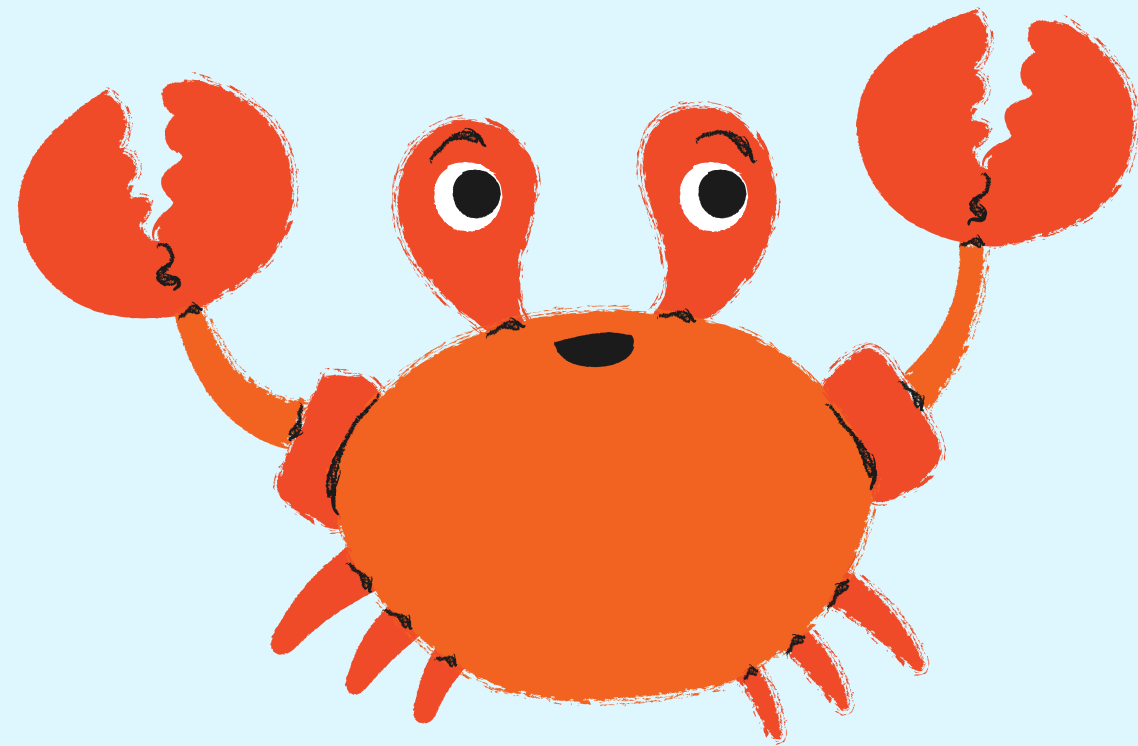
This is a shark.



Sharks are  
scary.

**Let's read and trace!**

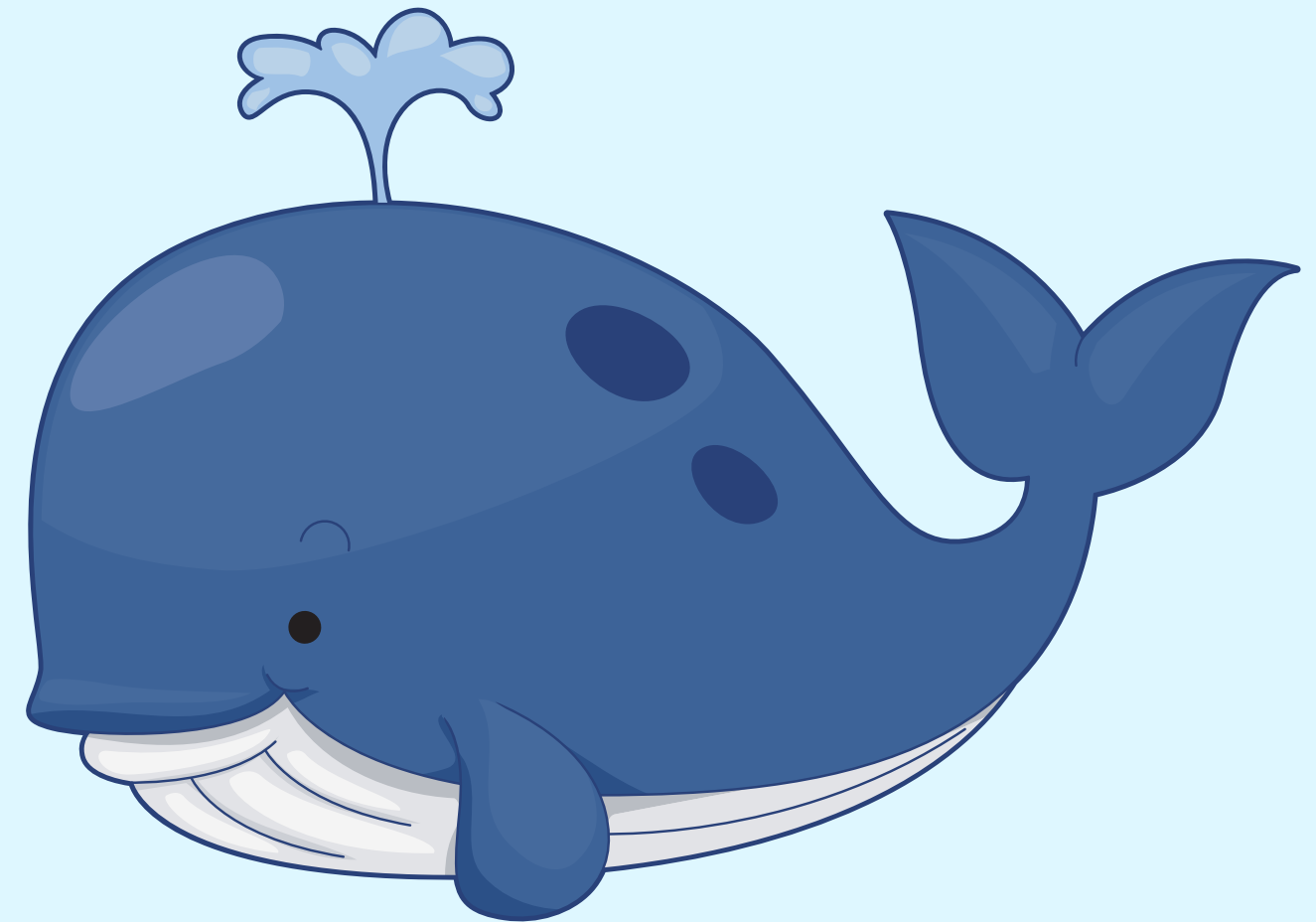
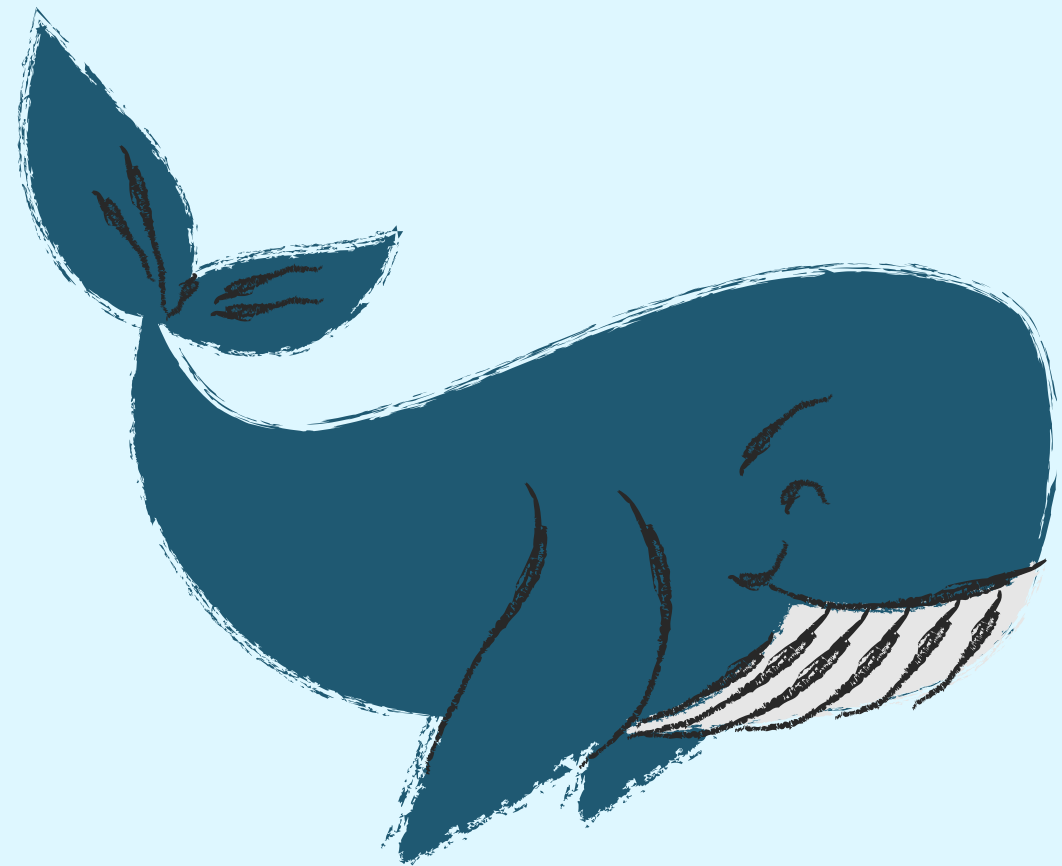
This is a crab.



Crabs are fast.

**Let's read and trace!**

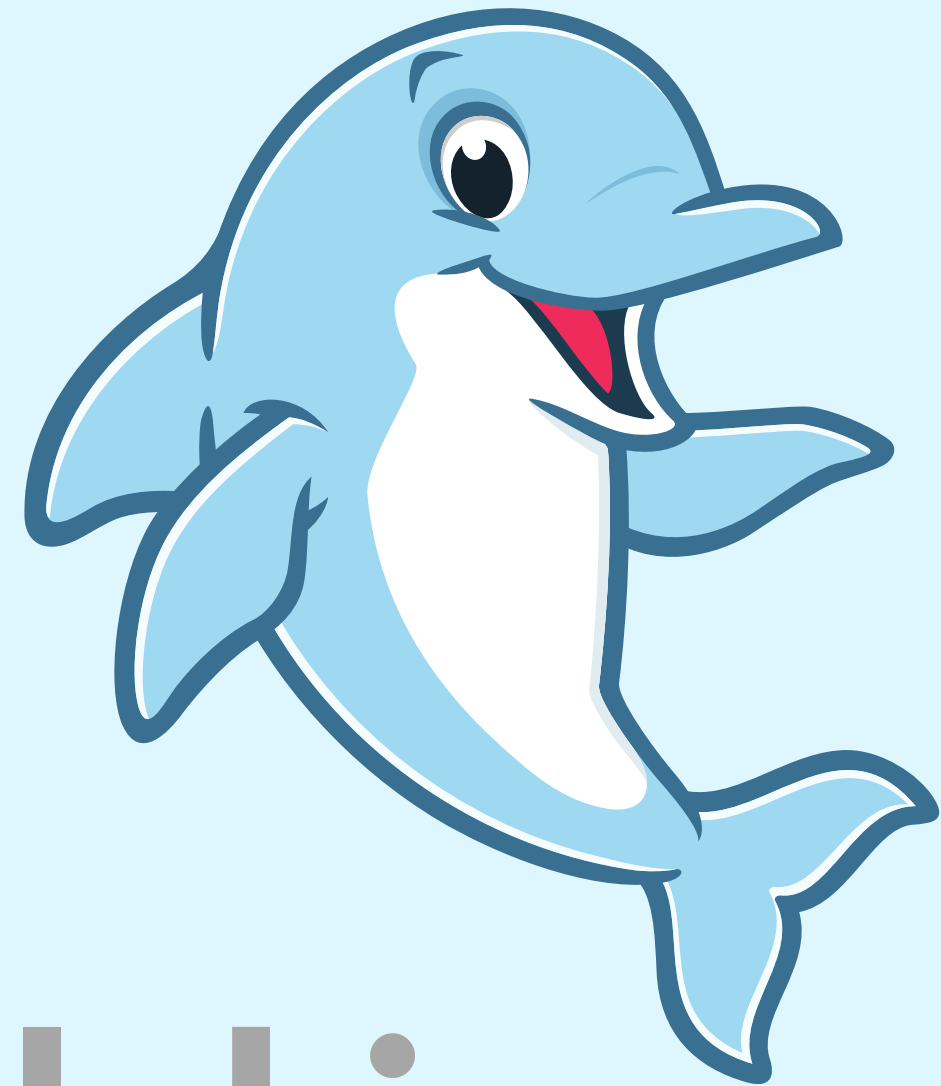
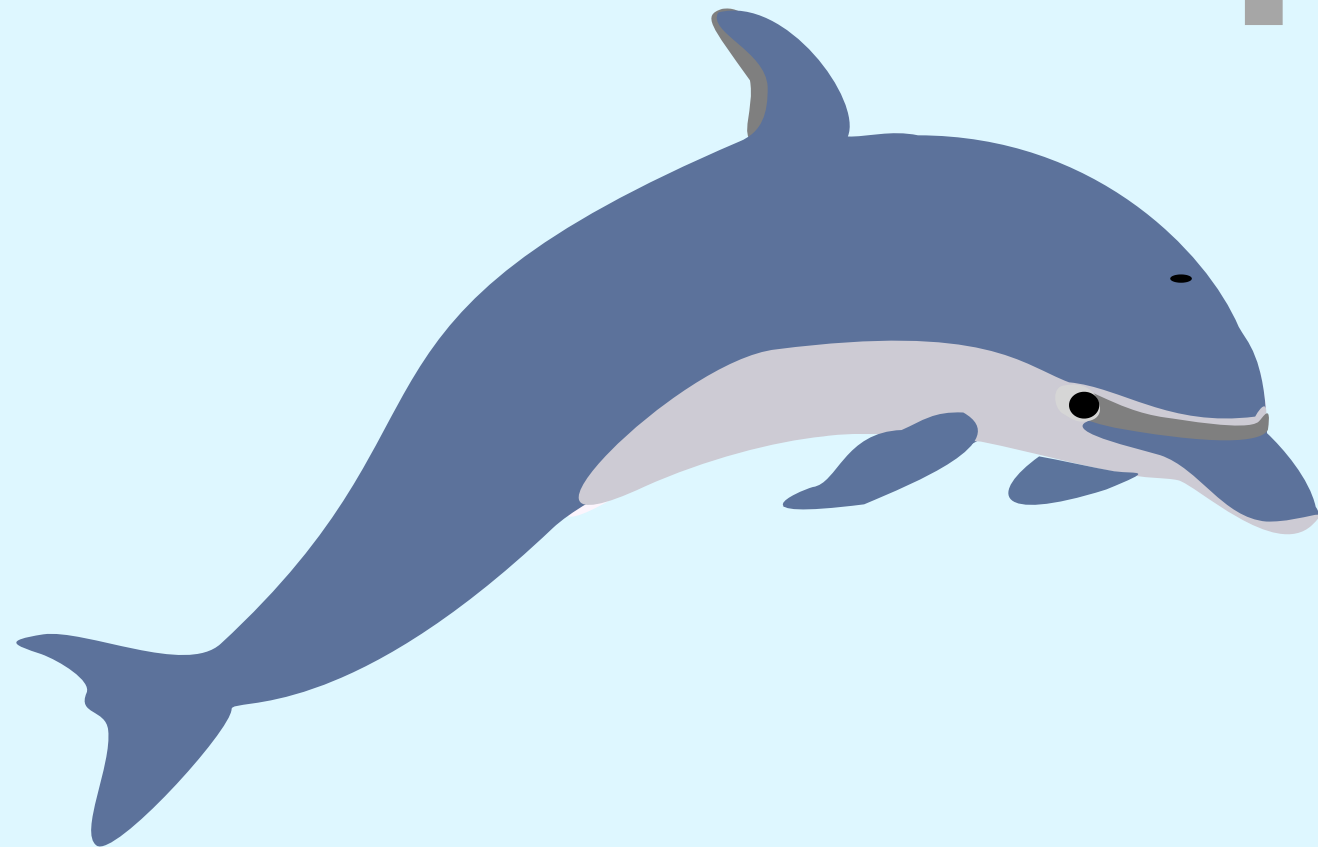
This is a whale.



Whales are big.

**Let's read and trace!**

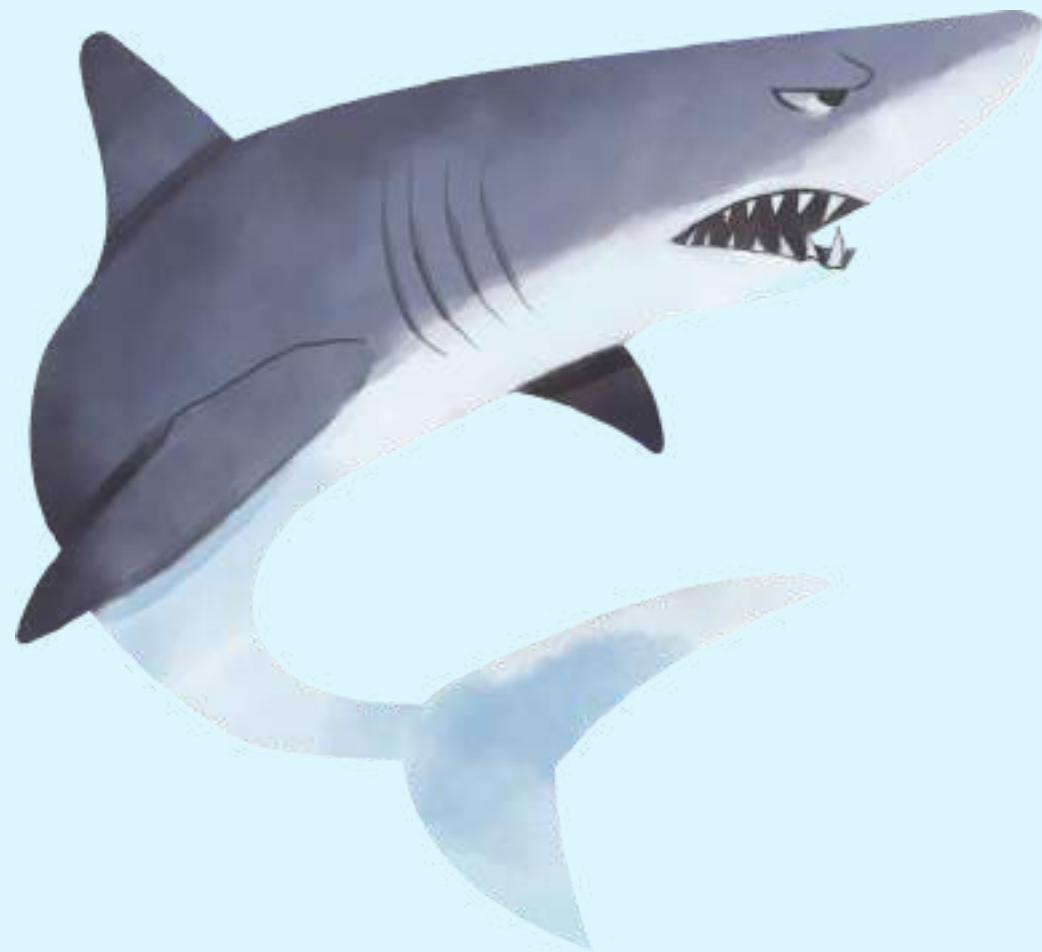
This is a dolphin.



Dolphins are  
smart.

**Let's read and trace, and write!**

Sharks are scary,  
aren't they?

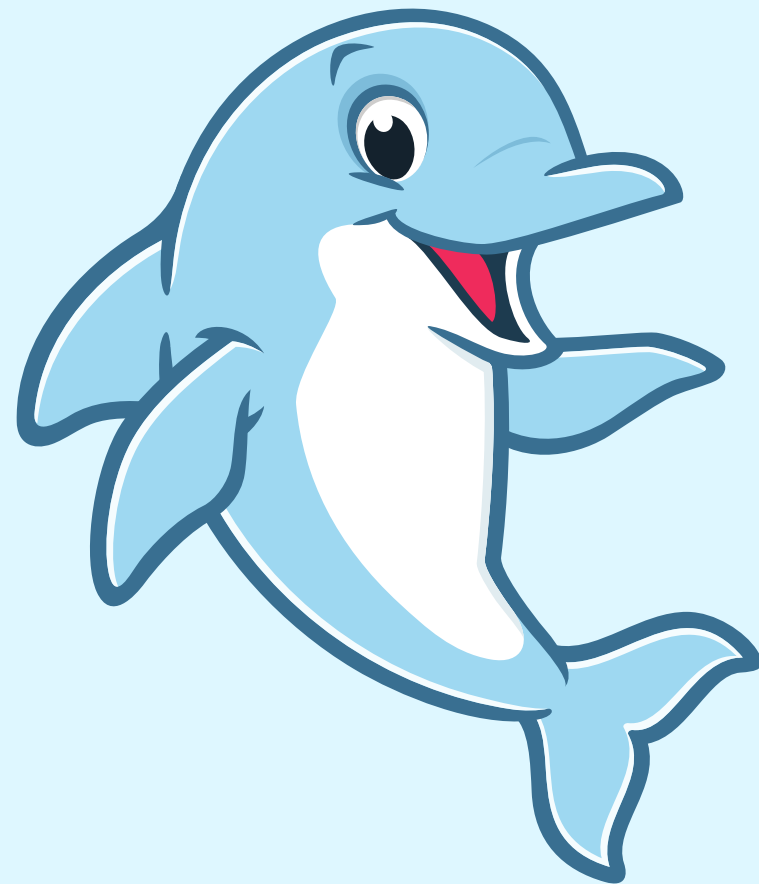


Yes, they are.  
No, they aren't.

---

**Let's read and trace, and write!**

Dolphins are smart,  
aren't they?



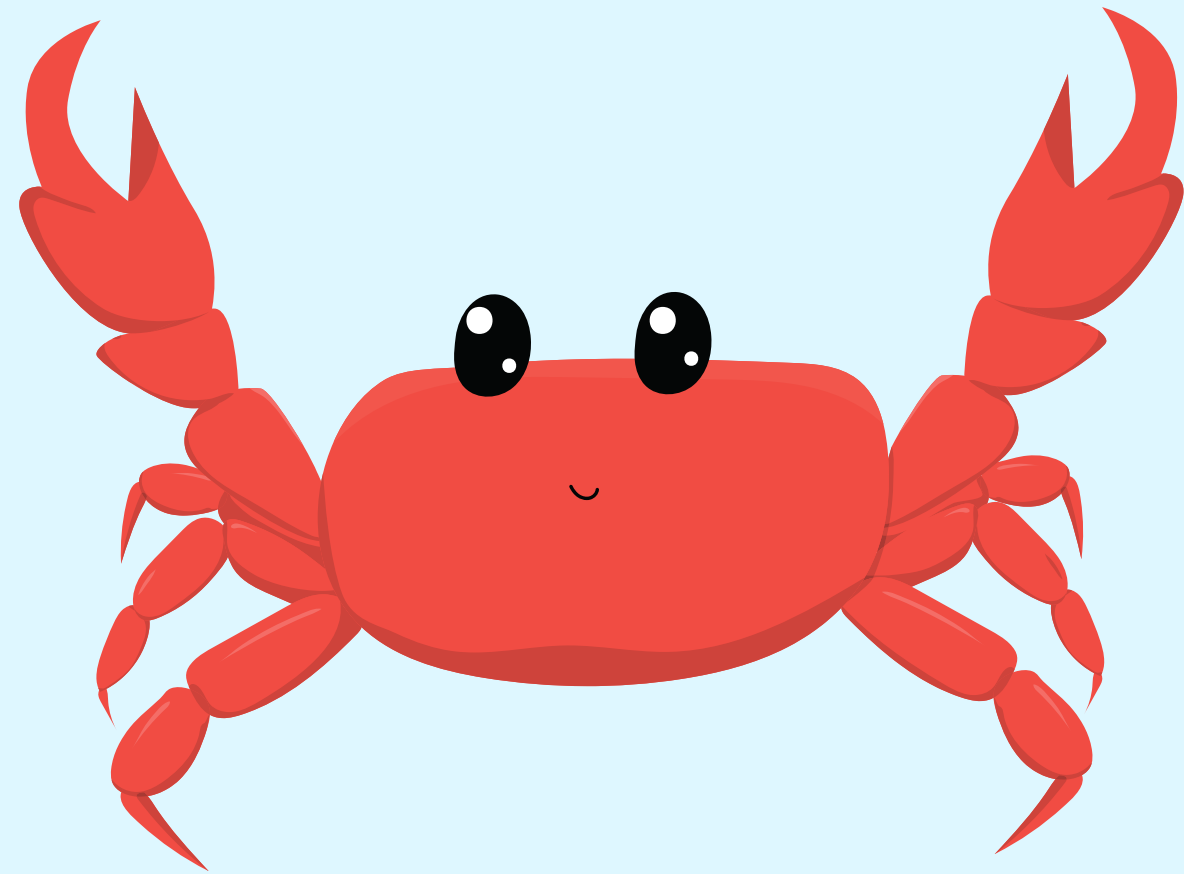
Yes, they are.  
No, they aren't.

---



**Let's read and trace, and write!**

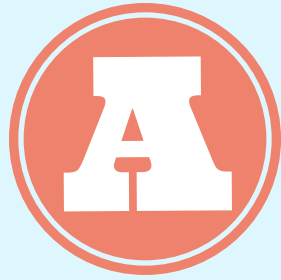
Crabs are fast,  
aren't they?



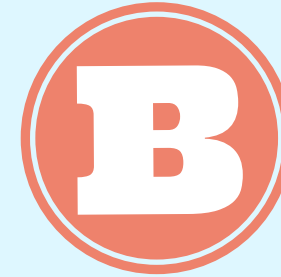
Yes, they are.  
No, they aren't.

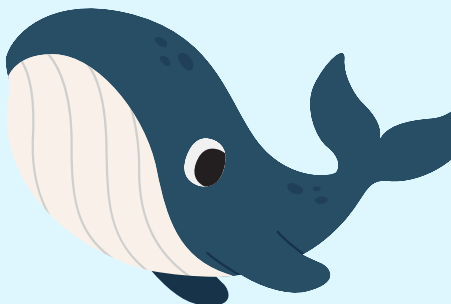


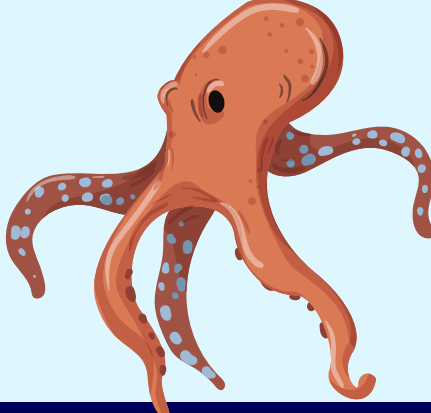
---

# Match A to B.



1. They are colorful.
2. They are slow.
3. They are big.
4. They are long.



1. A cartoon illustration of a blue whale with a white belly, swimming.
2. A cartoon illustration of a purple and blue jellyfish with long tentacles.
3. A cartoon illustration of a green sea turtle swimming.
4. A cartoon illustration of an orange octopus with blue spots on its tentacles.

**Which of these animals do you like, and which of them do you not like?**

**Write the names in the box.**

I like..



I don't like..





**You've reached the end.  
Great job!**